

# AMEYA GROUP DHANISHTHA

GULMOHAR LANE,  
SION CHUNABHATTI



Artist's Impression



# LOCATION

## SION CHUNABHATTI (EAST)

- Located next to the Eastern Expressway, Dhanishtha offers great connectivity, making it accessible anywhere within the city due to its central location, becoming an ideal choice for residential investment. The vicinity has become a great choice for family homes and increased connectivity because of the BKC Connector which is 1 minute away.



5min  
Chunabhatti



2min  
BKC  
Connector



10min  
Sion



EDUCATION

5min  
Orchid /Our  
lady/VPP College



1min  
Eastern express  
highway



5min  
Reliance Smart  
bazar



5min  
Somaiya  
hospital



2min  
PlayGround



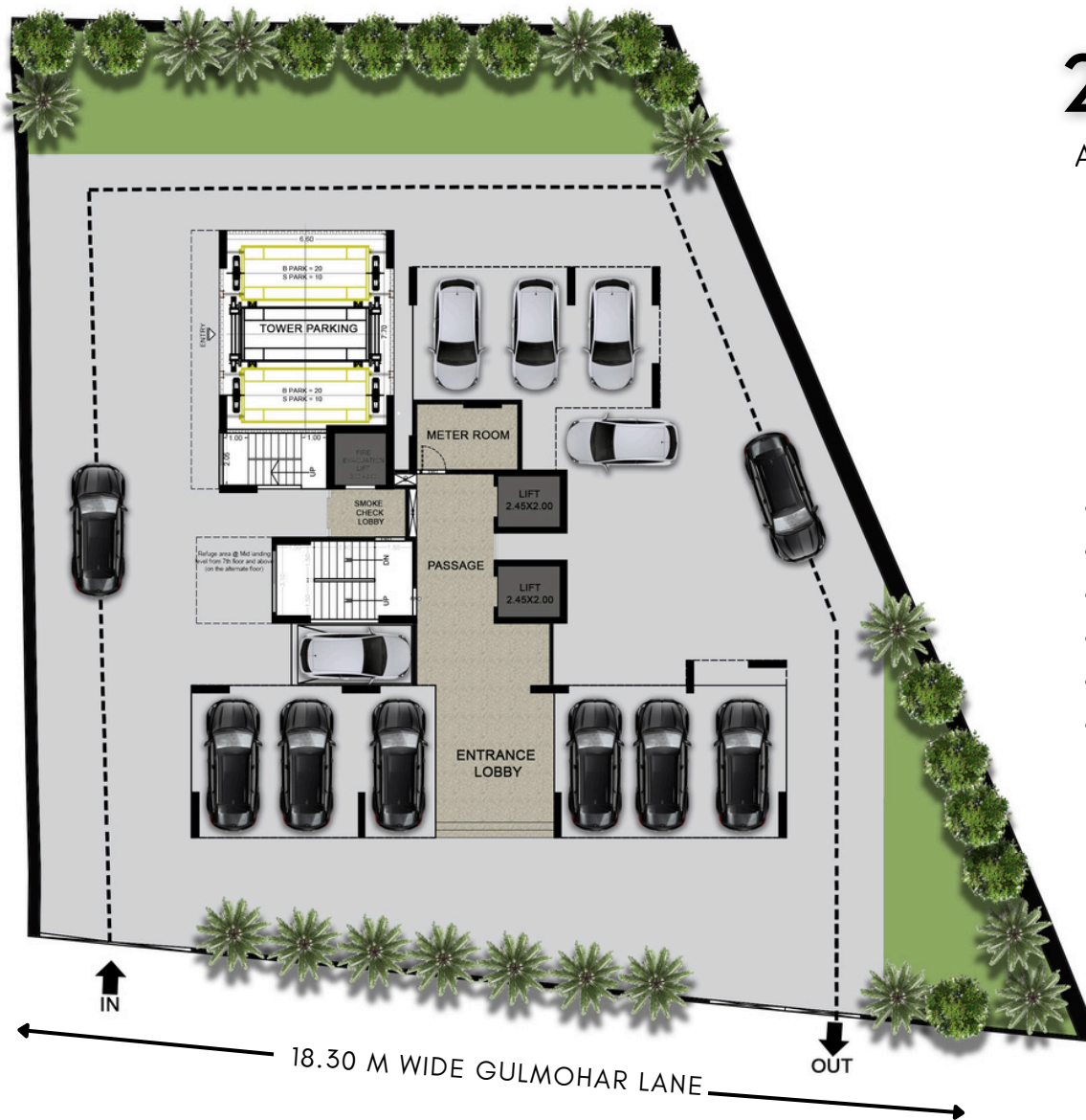
30 min  
by car

# 2BHK & 3BHK

APARTMENT FOR SALE

## AMENITIES

- GROUND + 21 STOREY BUILDING
- CAR PARKING TOWER UPTIL 21 FLOORS
- STACK PARKING
- RECREATIONAL AREA
- LAVISH DOUBLE HEIGHT ENTRANCE LOBBY
- GARDEN



GROUND FLOOR PLAN

## ENTRANCE LOBBY

DOUBLE HEIGHT ENTRANCE LOBBY

24x7 SECURITY AND CCTV IN  
COMMON AREAS

AIR CONDITIONED

MANDIR SPACE

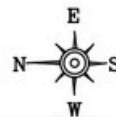
3 HIGH SPEED LIFTS



Artist's Impression



**TYPICAL FLOOR PLAN  
DHANISHTHA CHS**



## 2BHK & 3BHK

APARTMENT FOR SALE

### RERA CARPET AREA

#### 2BHK

FLAT 1 - 680.00 SQ.FT

FLAT 3 - 775.00 SQ.FT

#### 3BHK

FLAT 2 - 1055.00 SQ.FT

- 2 PASSENGER LIFTS
- 1 FIRE LIFT
- WIDE VENTILATED PASSAGE
- ONLY 3 FLATS PER FLOOR





▲  
ENTRY

### 2BHK

FLAT 1 - 680.00 SQ.FT  
FLAT 3 - 775.00 SQ.FT



▲  
ENTRY

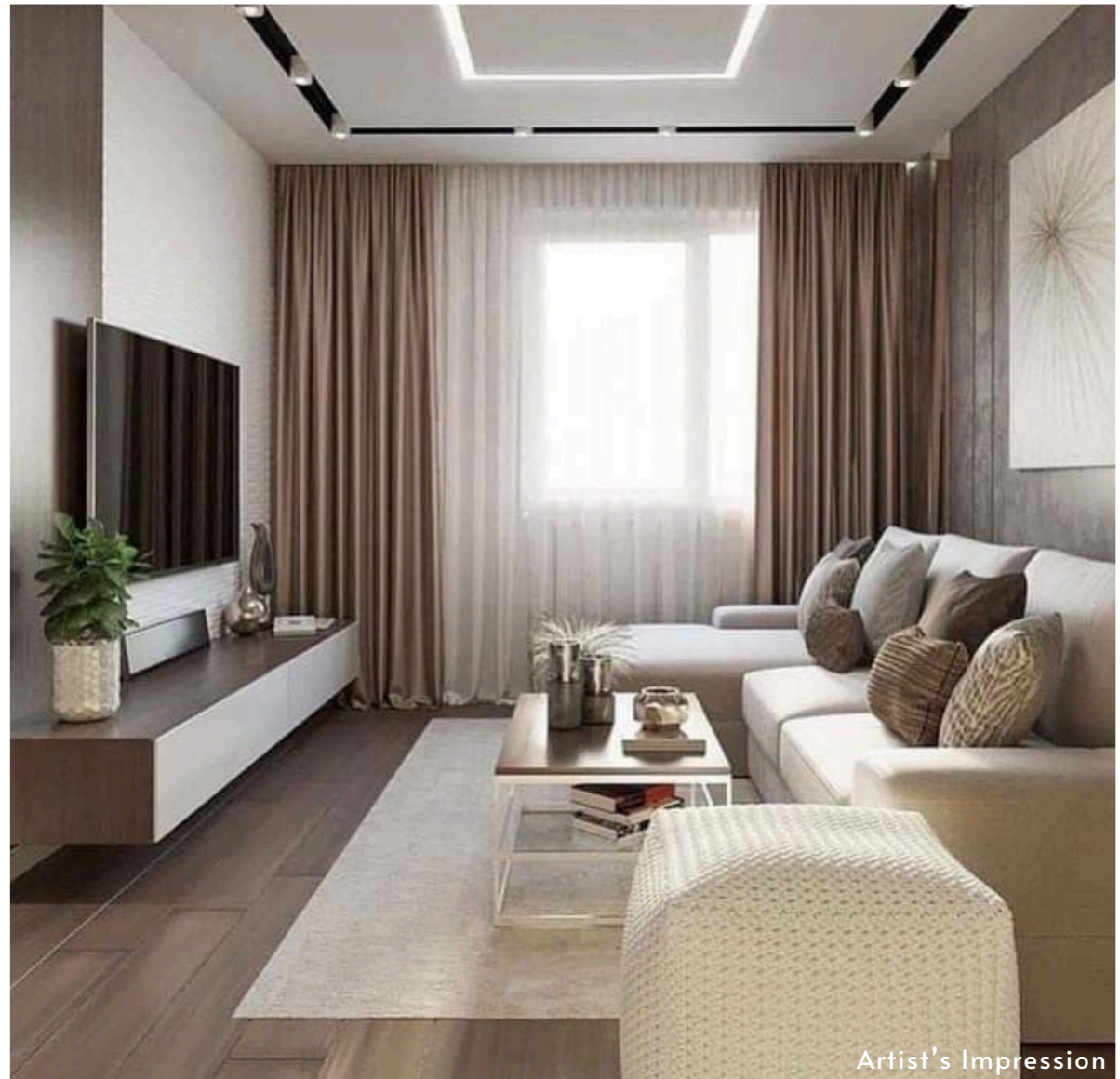
### 3BHK

FLAT 2 - 1055.00 SQ.FT



Artist's Impression

## LIVING WITH DINING



Artist's Impression



Artist's Impression

## SPACIOUS KITCHEN WITH DRY BALCONY

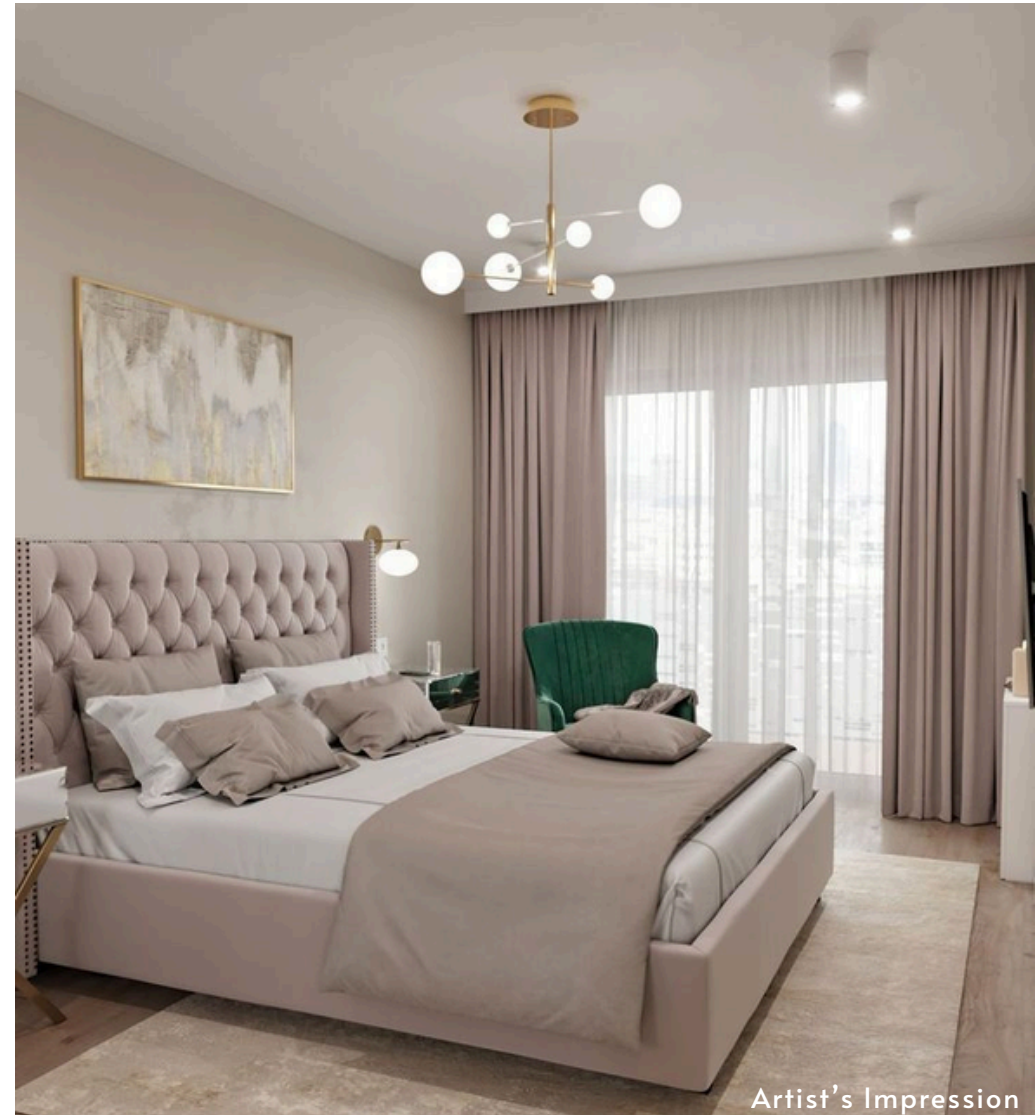


Artist's Impression



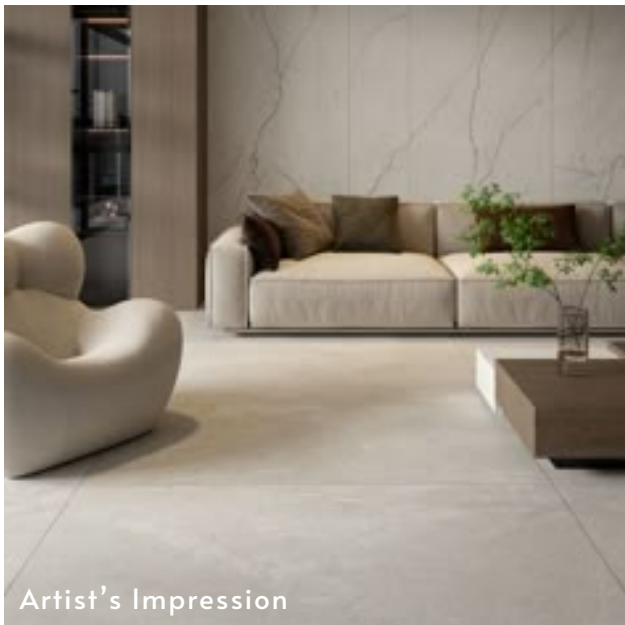
Artist's Impression

## LIGHT AND VENTILATED BEDROOMS



Artist's Impression

## MASTER BEDROOMS WITH ATTACHED TOILET



## HIGH QUALITY HOMES

---

VITRIFIED FLOORING TILES IN ALL ROOMS

QUALITY TO MAKE YOUR HOME LOOK  
MORE LUXURIOUS

CONCEALED PLUMBING WITH FULL  
HEIGHT DESIGNER TILES

GRANITE PLATFORM WITH QUALITY  
STAINLESS STEEL SINK

POWDER COATED SLIDING  
WINDOWS

## RECREATIONAL AREA



## FITNESS ZONE



Artist's Impression



**NEW LANDMARK IS TAKING PLACE,  
COME BE A PART OF IT**

**PROJECT BY**



**201/202, Vaishnavi heights, Sion- Chunabhatti (E), Mumbai -400 022.**

**Sales Enquiry - 9152273033**

**Email - [info@theameyagroup.in](mailto:info@theameyagroup.in)**